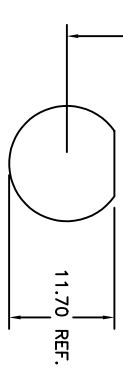
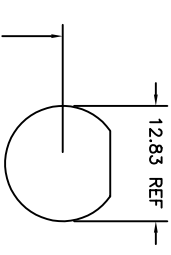
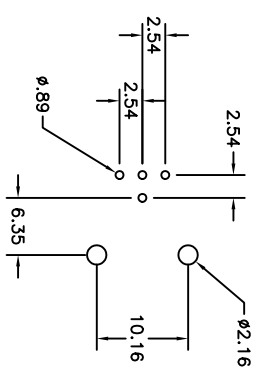
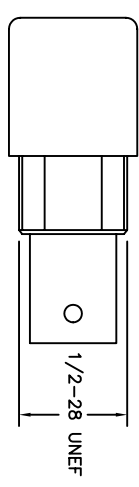


Rev	AWO #	Description	Date	Appr
-		Released	12/22/03	

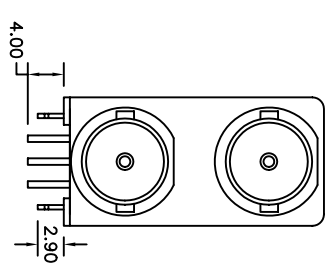
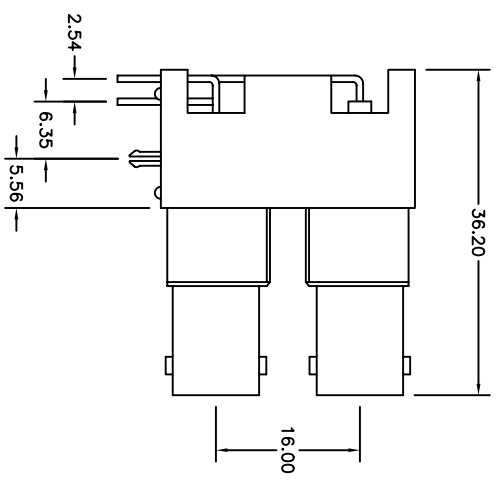
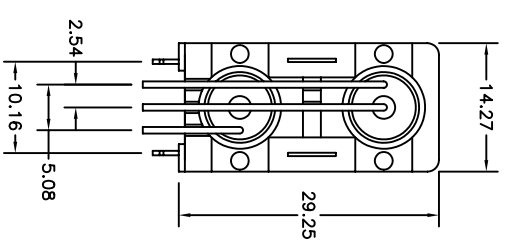
APPROVED: \_\_\_\_\_  
 DATE: \_\_\_\_\_ TITLE: \_\_\_\_\_



RECOMMENDED  
 PANEL CUTOUT



RECOMMENDED  
 PC Board Layout  
 Right Angle Mount



**SPECIFICATIONS**

**Material:** Zinc Diecast.  
**Housing:** Zinc Diecast.  
**Contacts:** Phosphor Bronze, Gold and Tin plated.  
**Body:** Zinc Alloy, Nickel Plated  
**Grounding Terminal:** Copper, Tin plated.  
**Electrical**  
 Nominal Impedance: 75 Ohms  
 Frequency Range: 0 – 1 GHz  
 Maximum Peak Voltage: 500V  
 Insulation Resistance: 5000 Mohms min @ 500 VDC  
 Dielectric Withstanding Voltage: 1500 VAC rms.  
 Temperature Range: -65°C to +165°C

**ADAM TECH**

909 Rahway Avenue, Union, NJ 07083  
 Phone: 908-687-5000 Fax: 908-687-5710

TITLE  
**DUAL PORT BNC, R/A PCB MOUNT,  
 75 OHM IMPEDANCE**

UNLESS OTHERWISE SPECIFIED ALL DIMENSIONS ARE MM [INCHES] TOLERANCES: EXCEPT AS NOTED INCHES	
X ± .10	ØX ± .10
.XX ± .020	ØXXX ± .015
.XXX ± .015	ØXXX ± .010
APPROVALS	DATE
DRAWN SLS	12/22/03
CHECKED	
APPROVED	

SIZE	PART NO.	REV.
X	RF1-01D-P-00-75-M	
REF:	SCALE: NTS	SHEET 1 OF 1